

# cinno WiFi Scannr

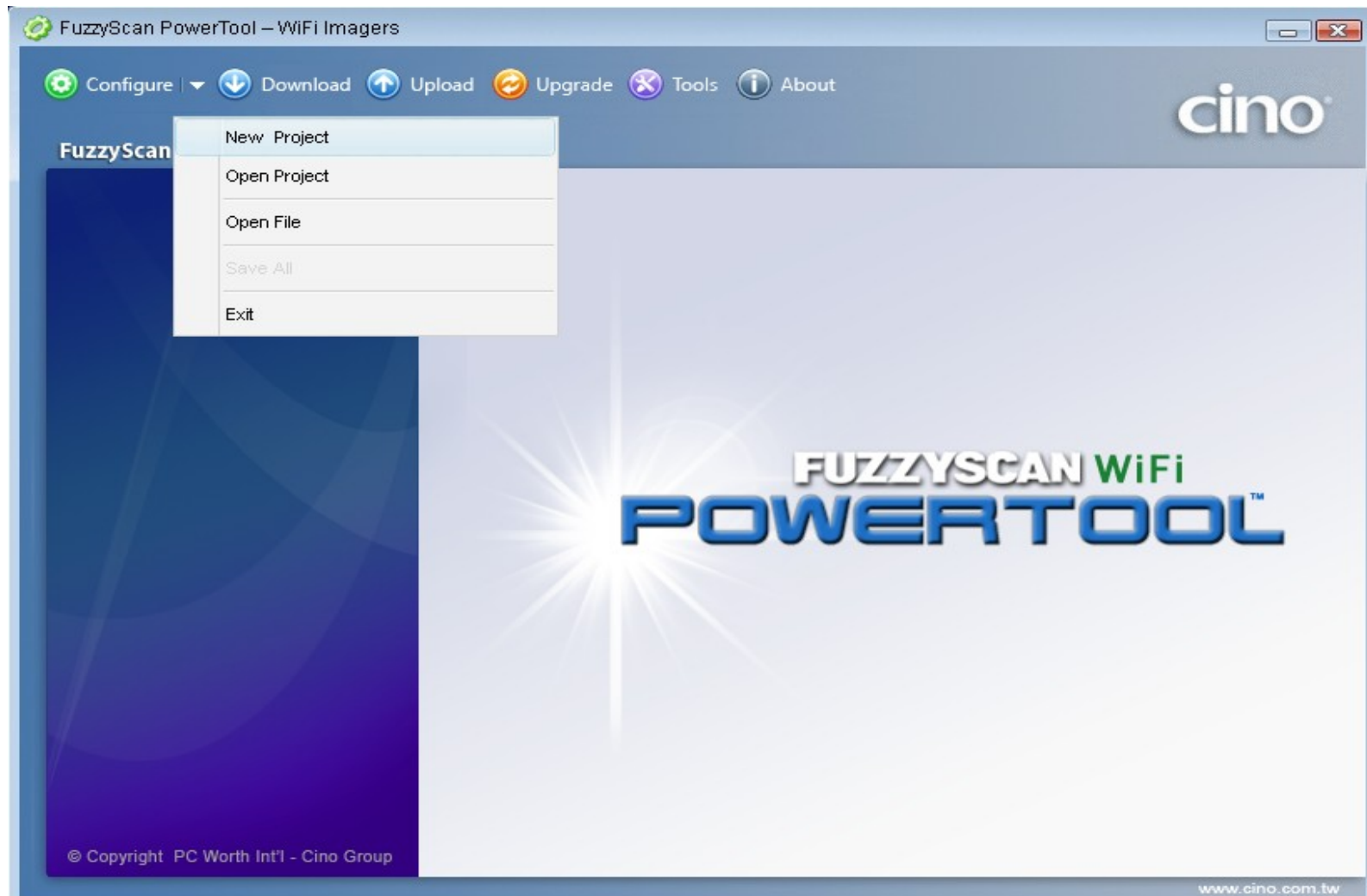


## 使用操作說明

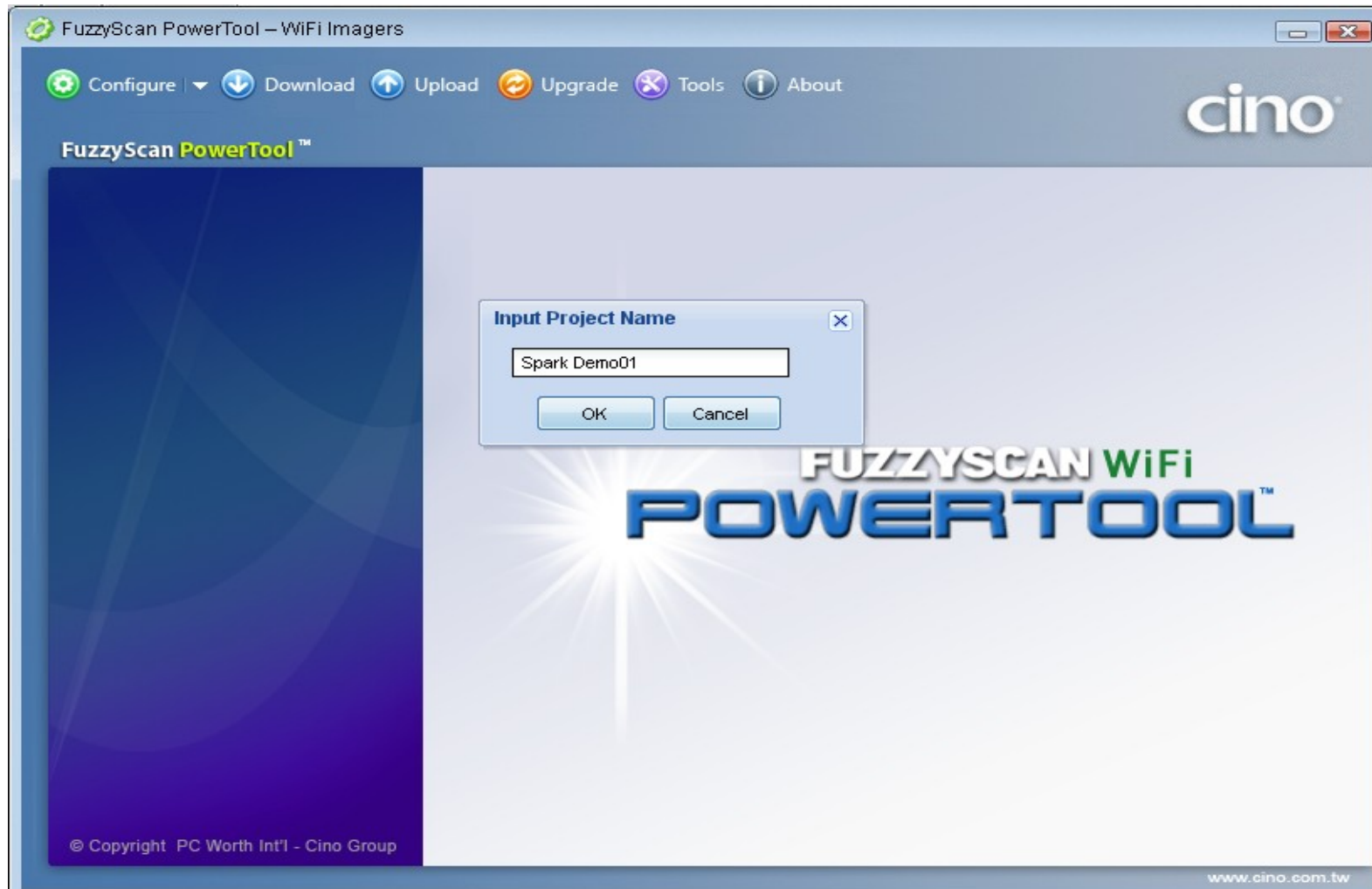
## 主畫面



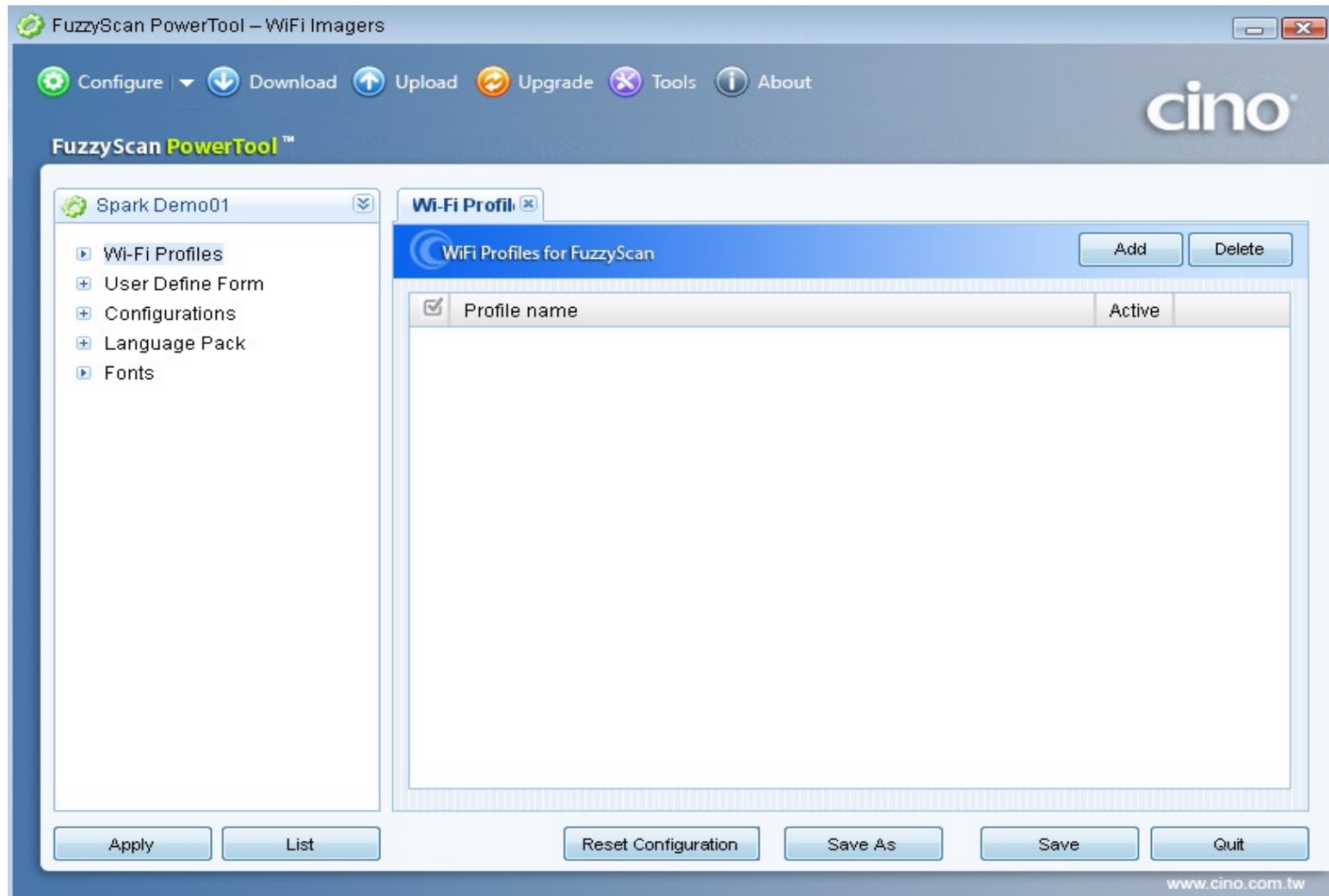
## 新增設定檔



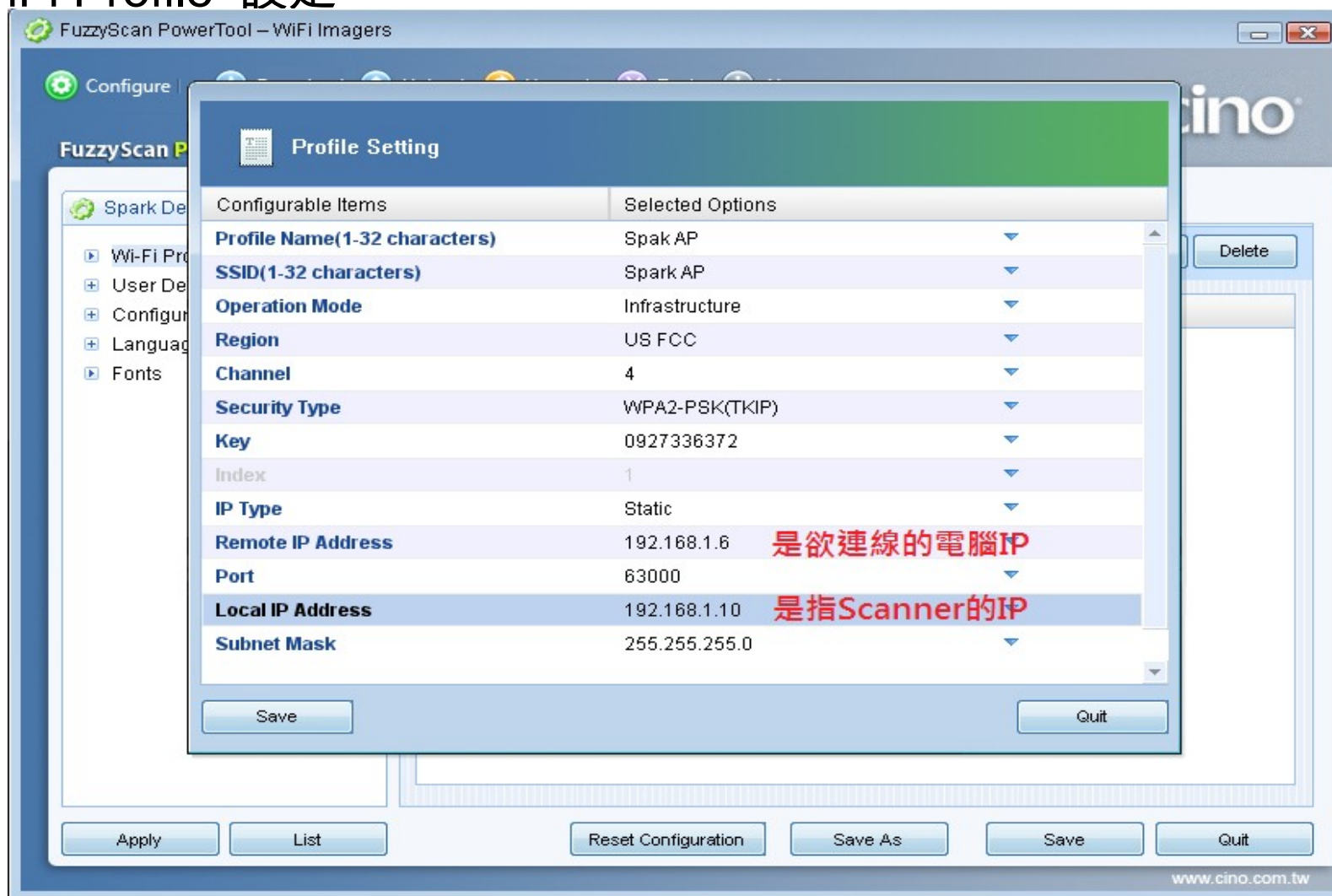
## 輸入檔名



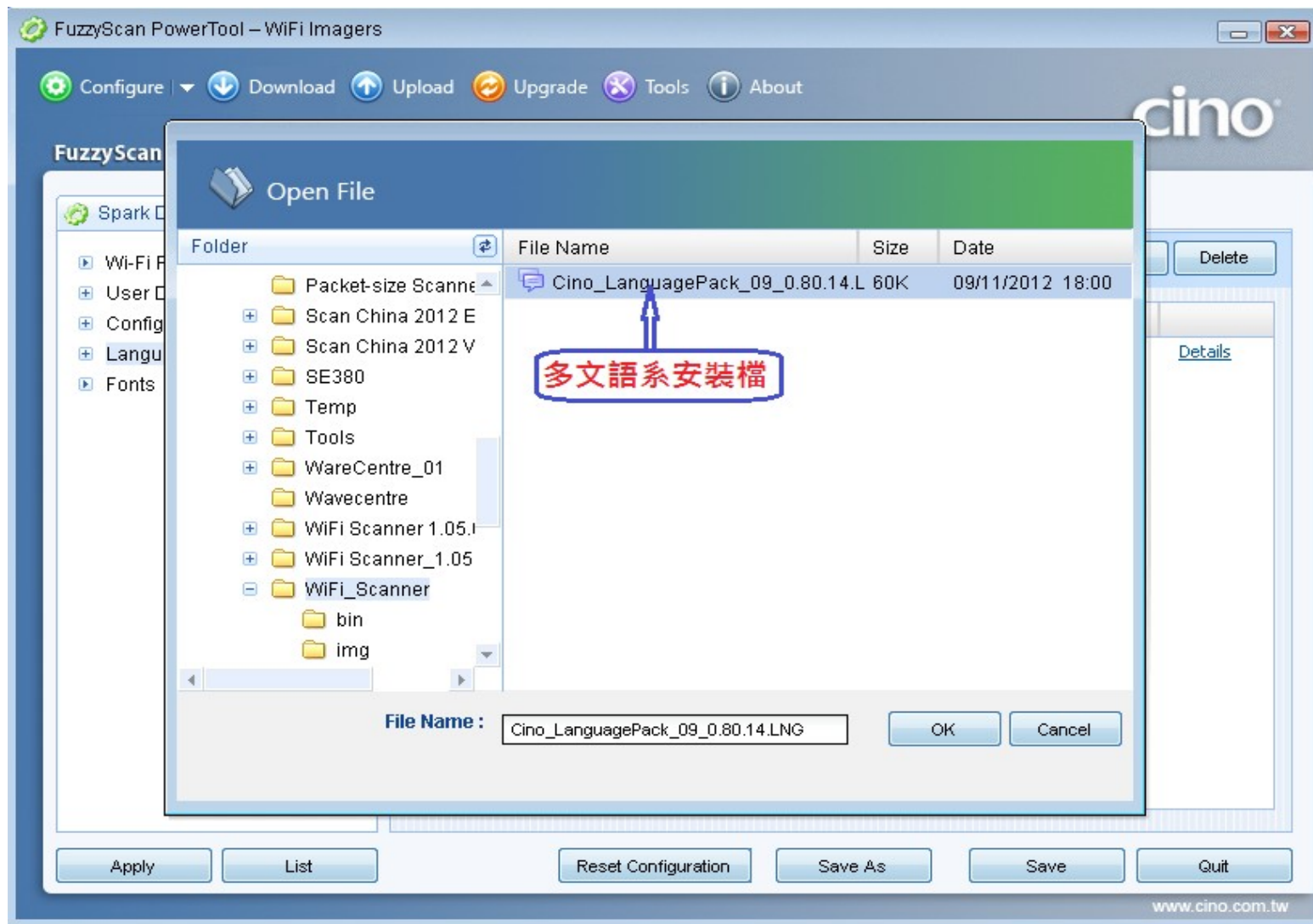
## WiFi Profile 設定



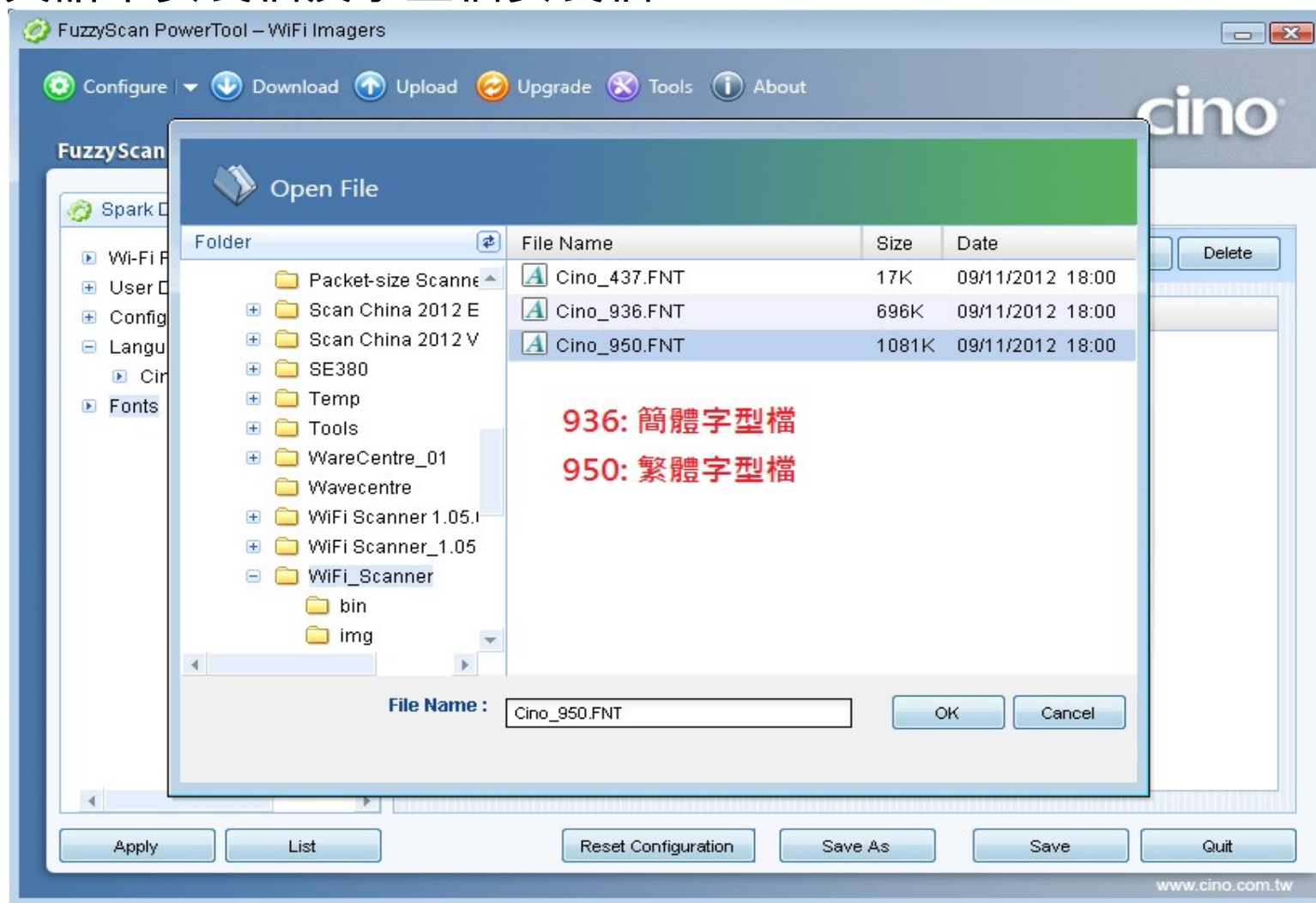
## WiFi Profile 設定



## 多文語系安裝檔及字型檔安裝檔

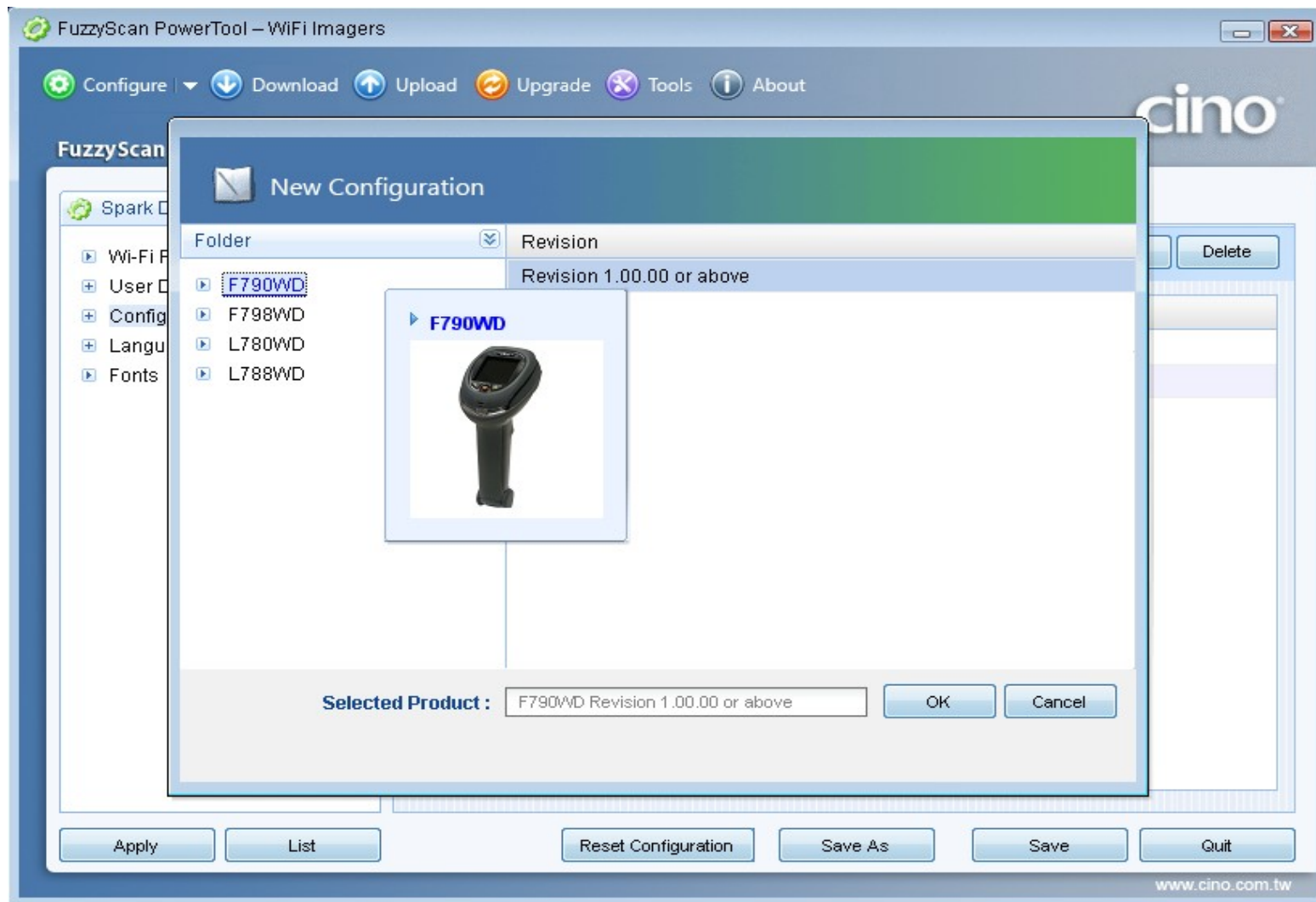


## 多文語系安裝檔及字型檔安裝檔

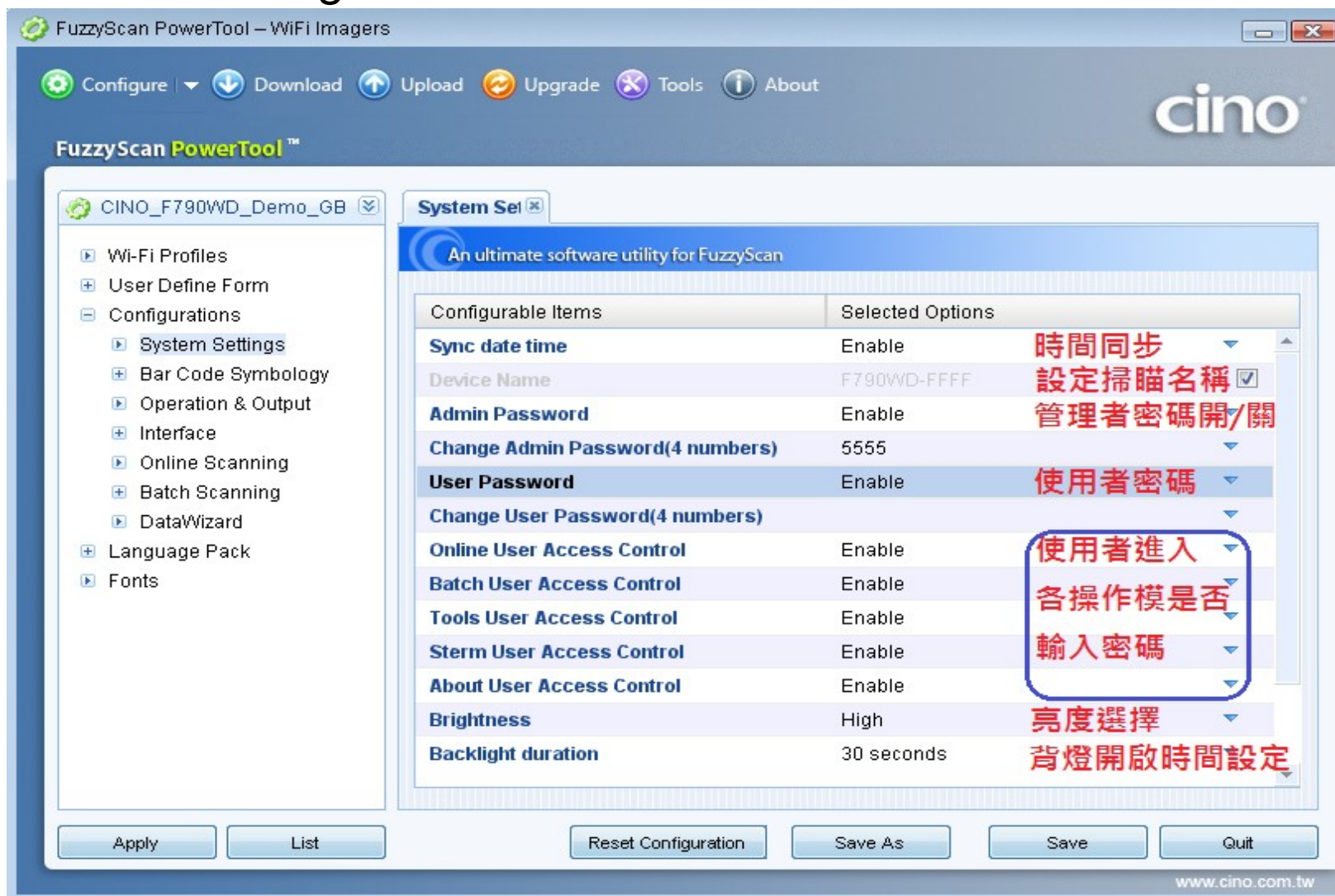




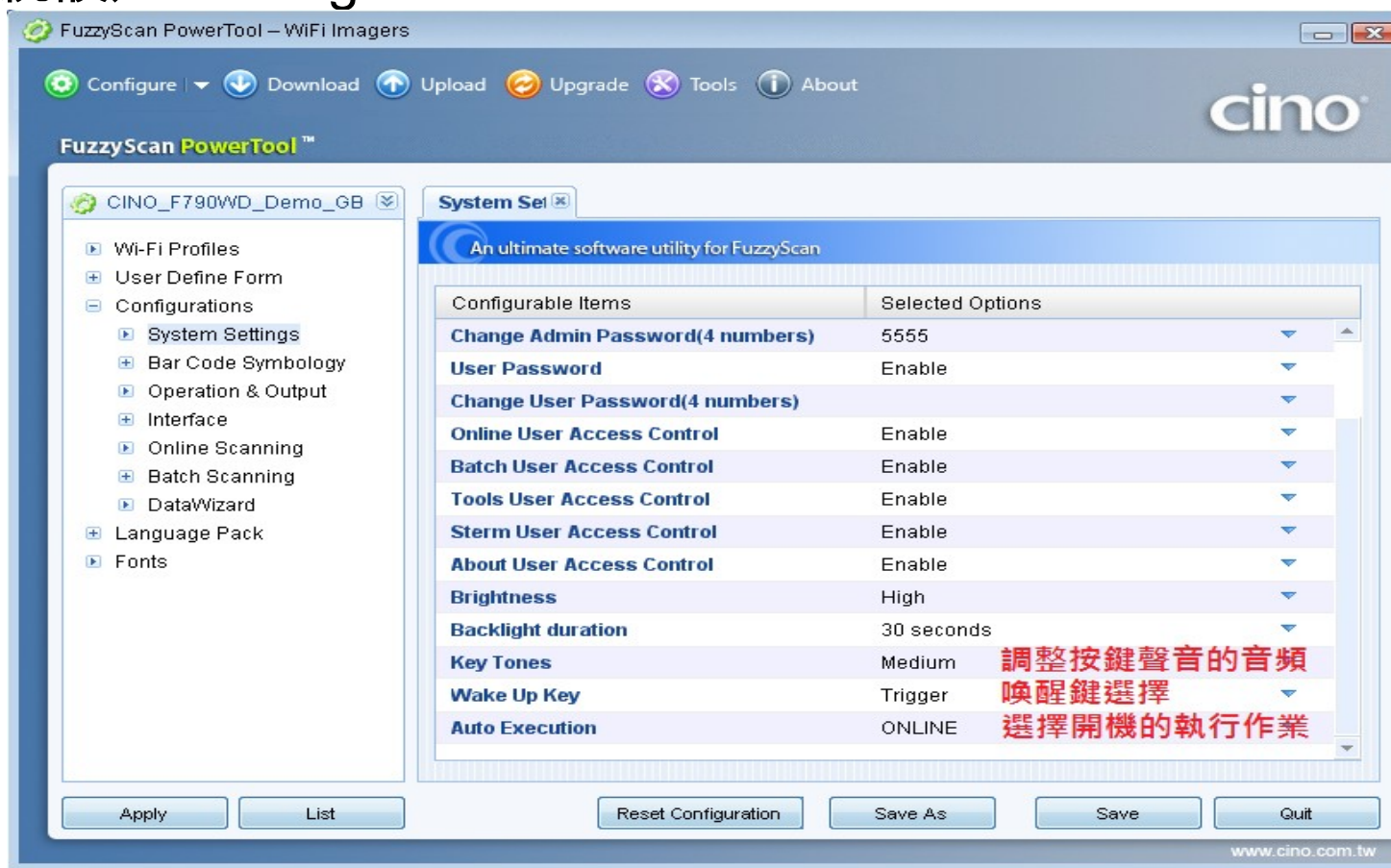
## 系統設定 / Configuration



## 系統設定 / Configuration

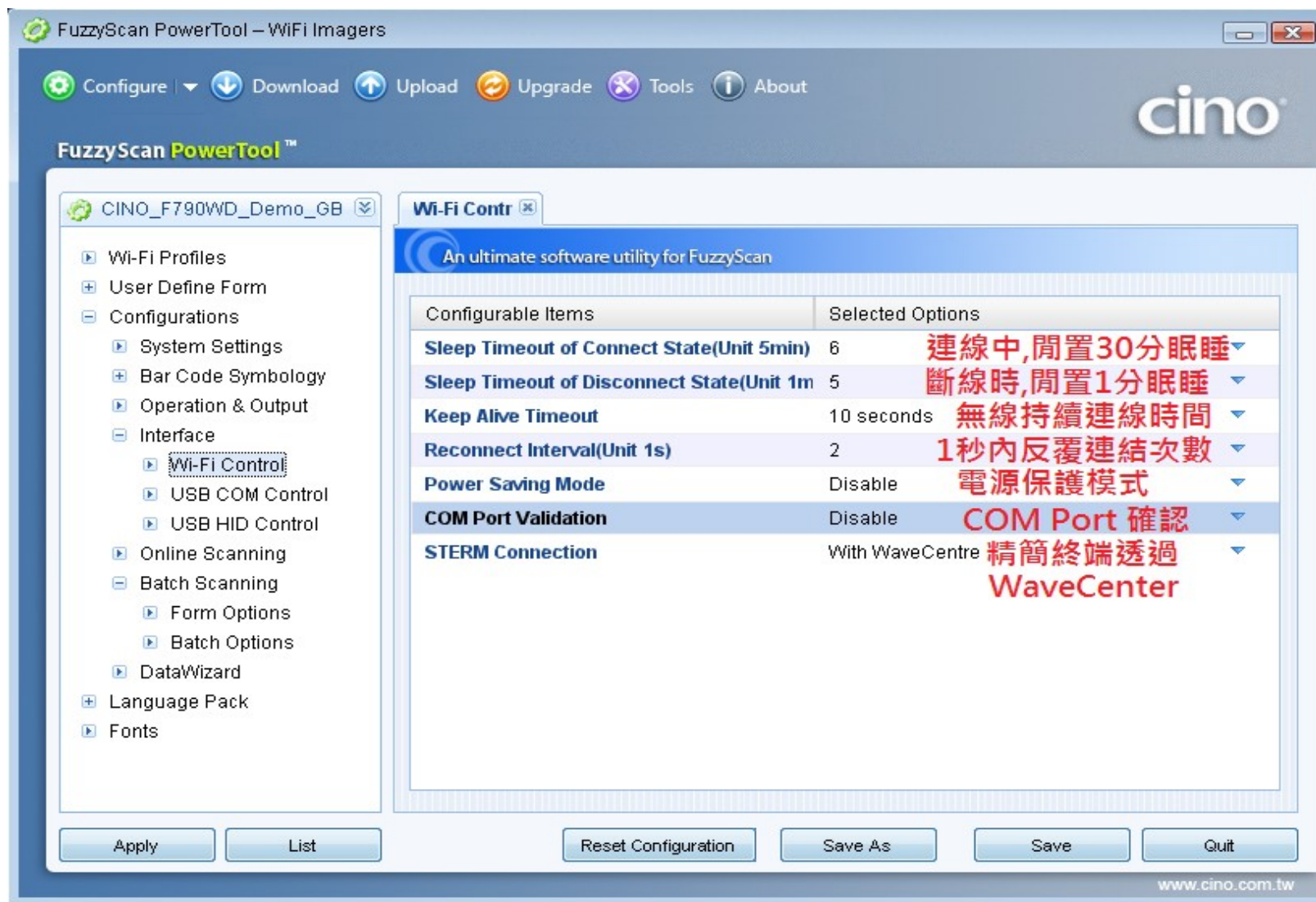


## 系統設定 / Configuration

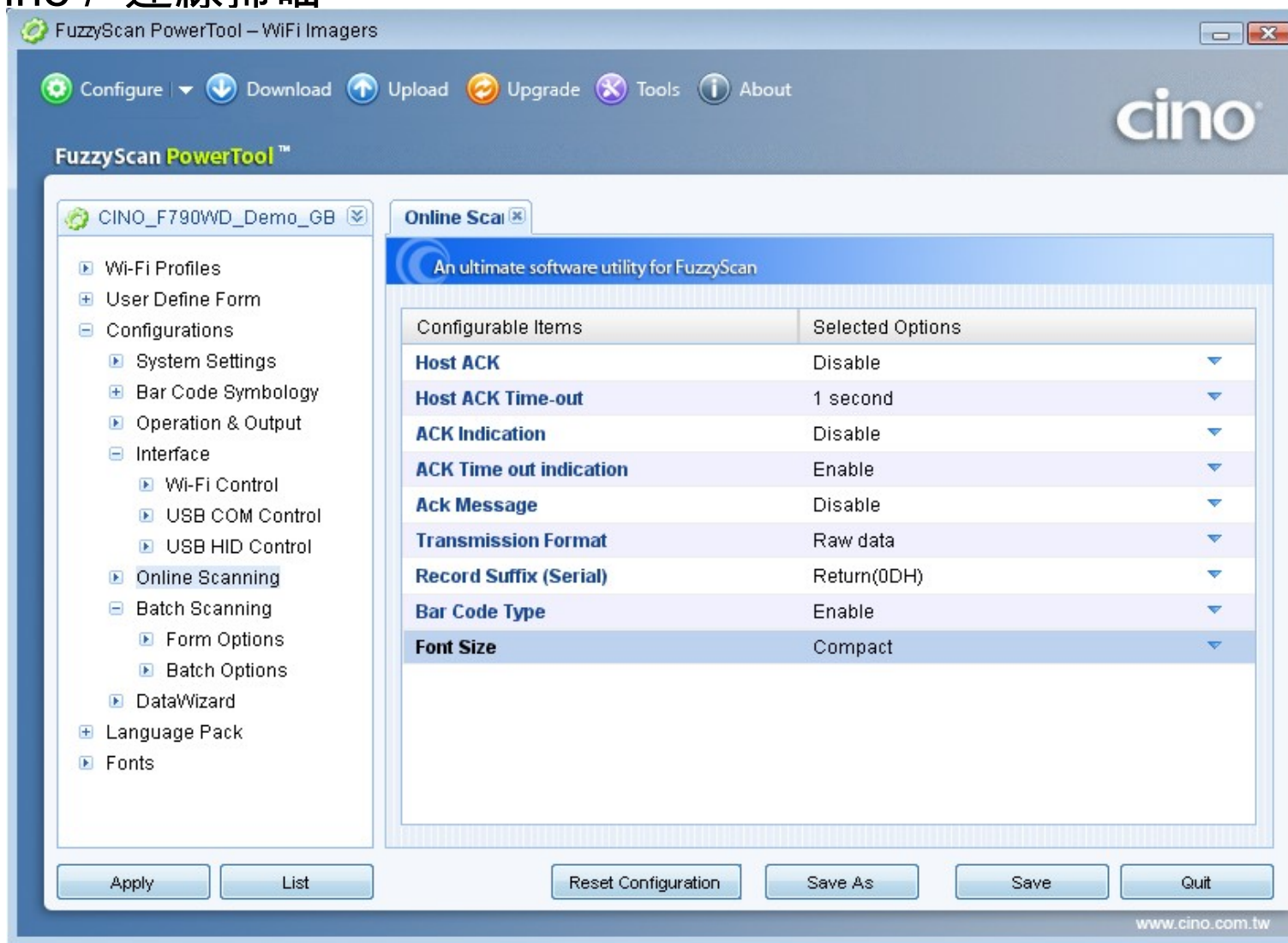


設定開機自動執行功能，需要開 admin 管理者密碼功能

## Interface / WiFi control



## Online / 連線掃瞄



## Batch/ 資料收集 欄位設定

**Form Options**

An ultimate software utility for FuzzyScan

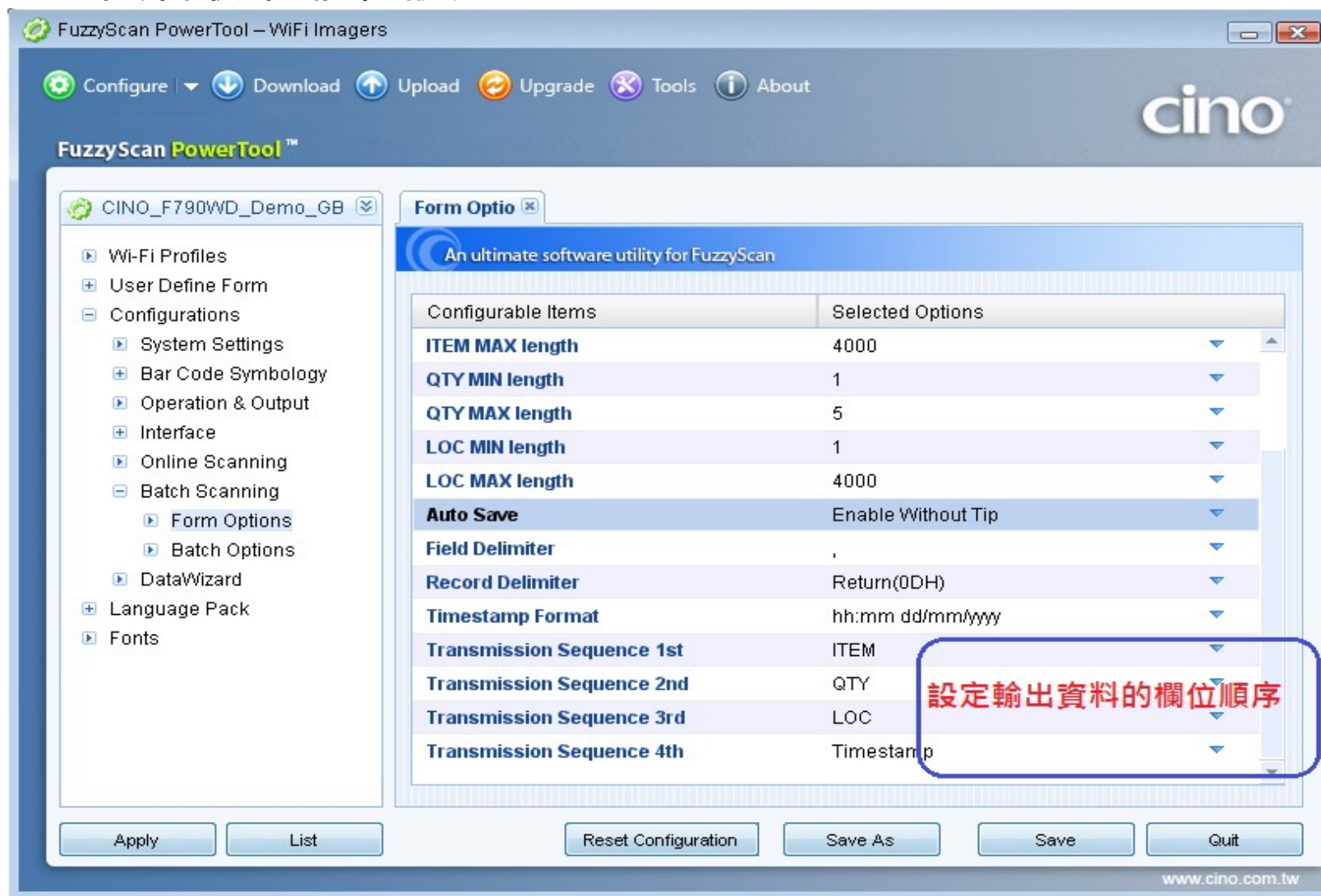
Configurable Items	Selected Options	Annotations	
Input Fields QTY(Quantity)	Enable	數量欄位	
Input Fields LOC(Location)	Enable	位置欄位開啟/關閉	
Input Fields Timestamp	Enable	時間欄位	
ITEM MIN length	1	各欄位輸入資料的 最小長度	
ITEM MAX length	4000		最大長度
QTY MIN length	1		
QTY MAX length	5		
LOC MIN length	1		
LOC MAX length	4000		
Auto Save	Enable Without Tip	輸入自動儲存	
Field Delimiter	,	欄位間隔符號	
Record Delimiter	Return(0DH)	每筆資料的最後符號	
Timestamp Format	hh:mm dd/mm/yyyy	時間格式	

Buttons: Apply, List, Reset Configuration, Save As, Save, Quit

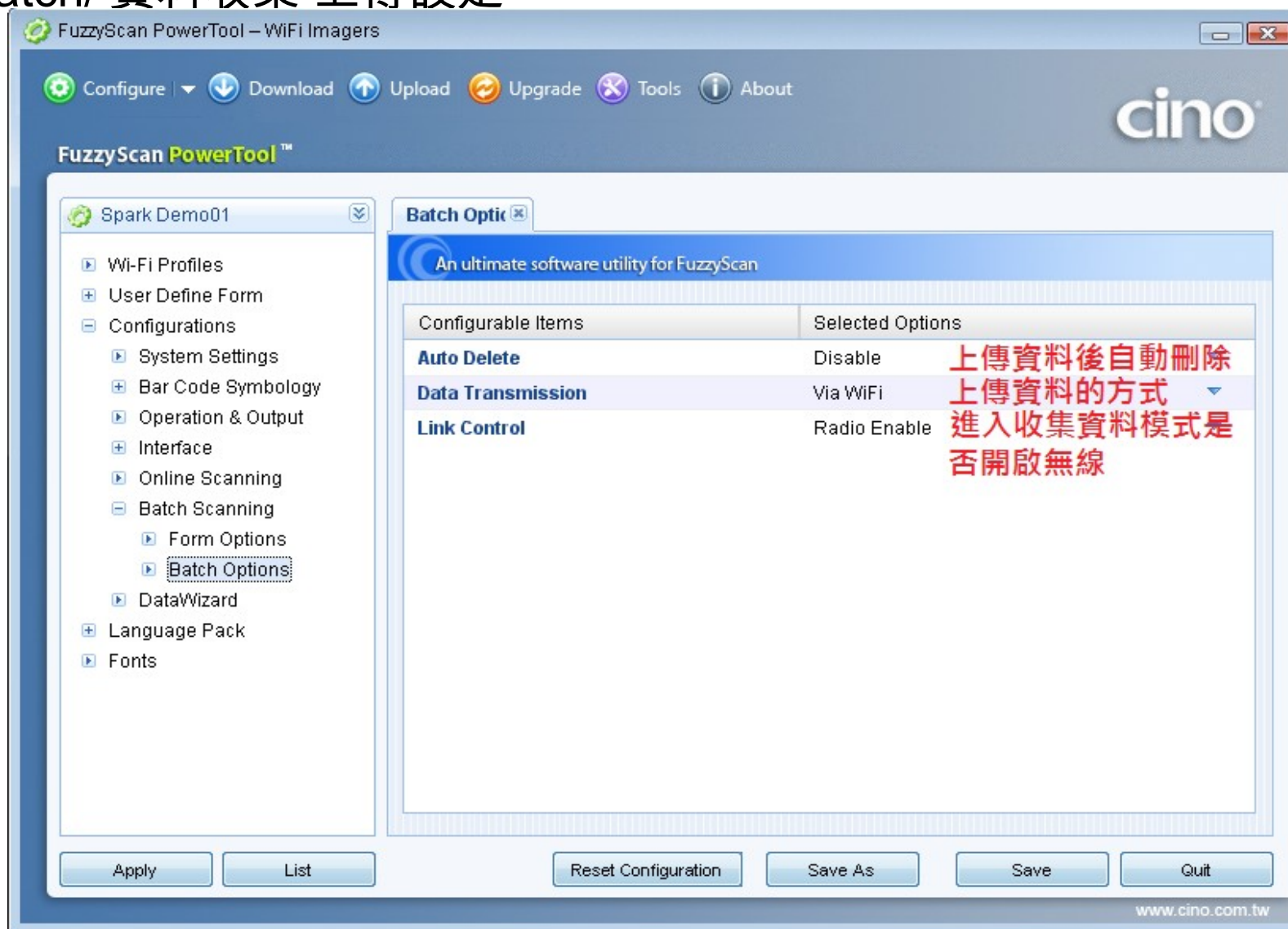
www.cino.com.tw

## Batch/ 資料收集 欄位設定

## F790WD 畫面

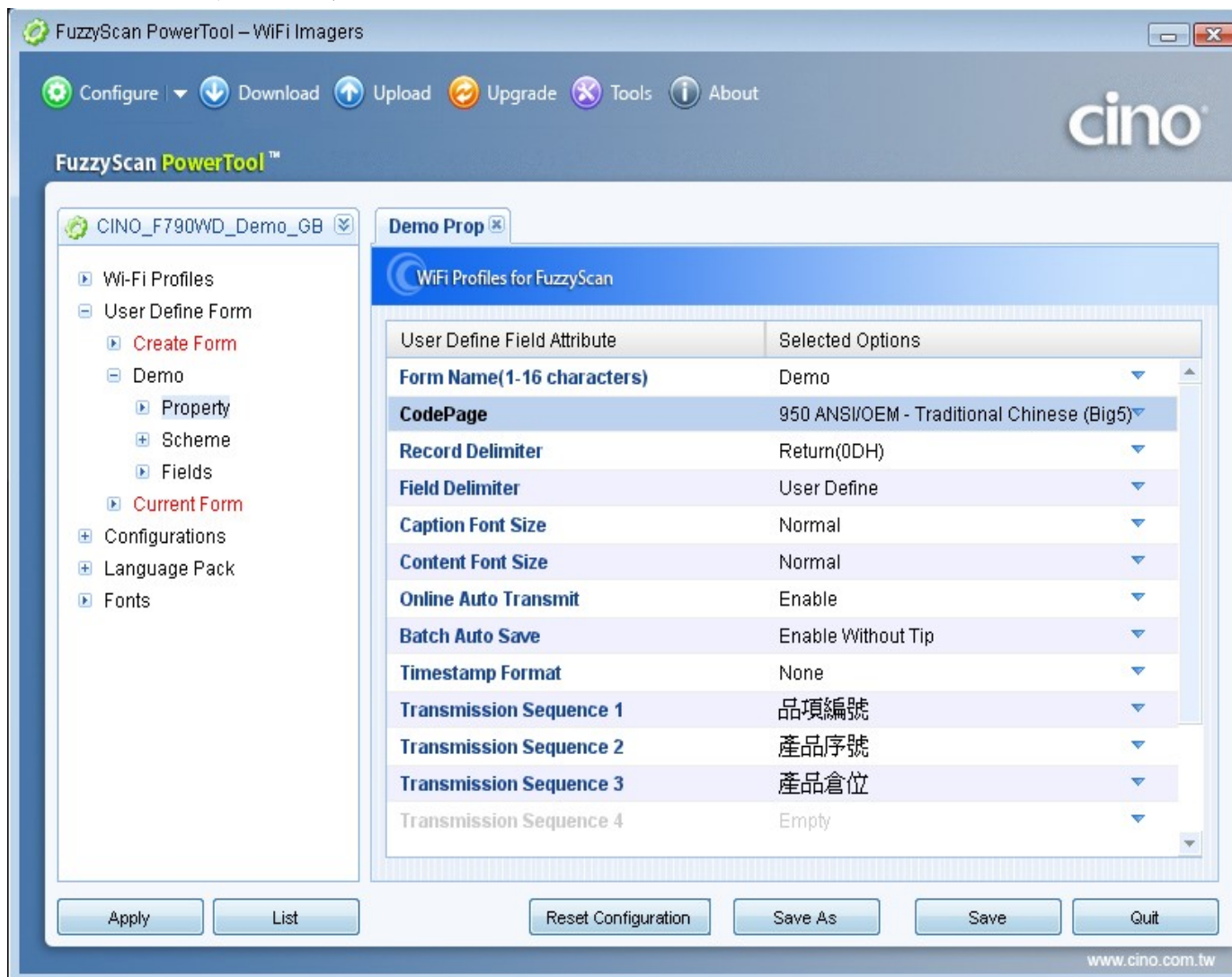


## Batch/ 資料收集 上傳設定





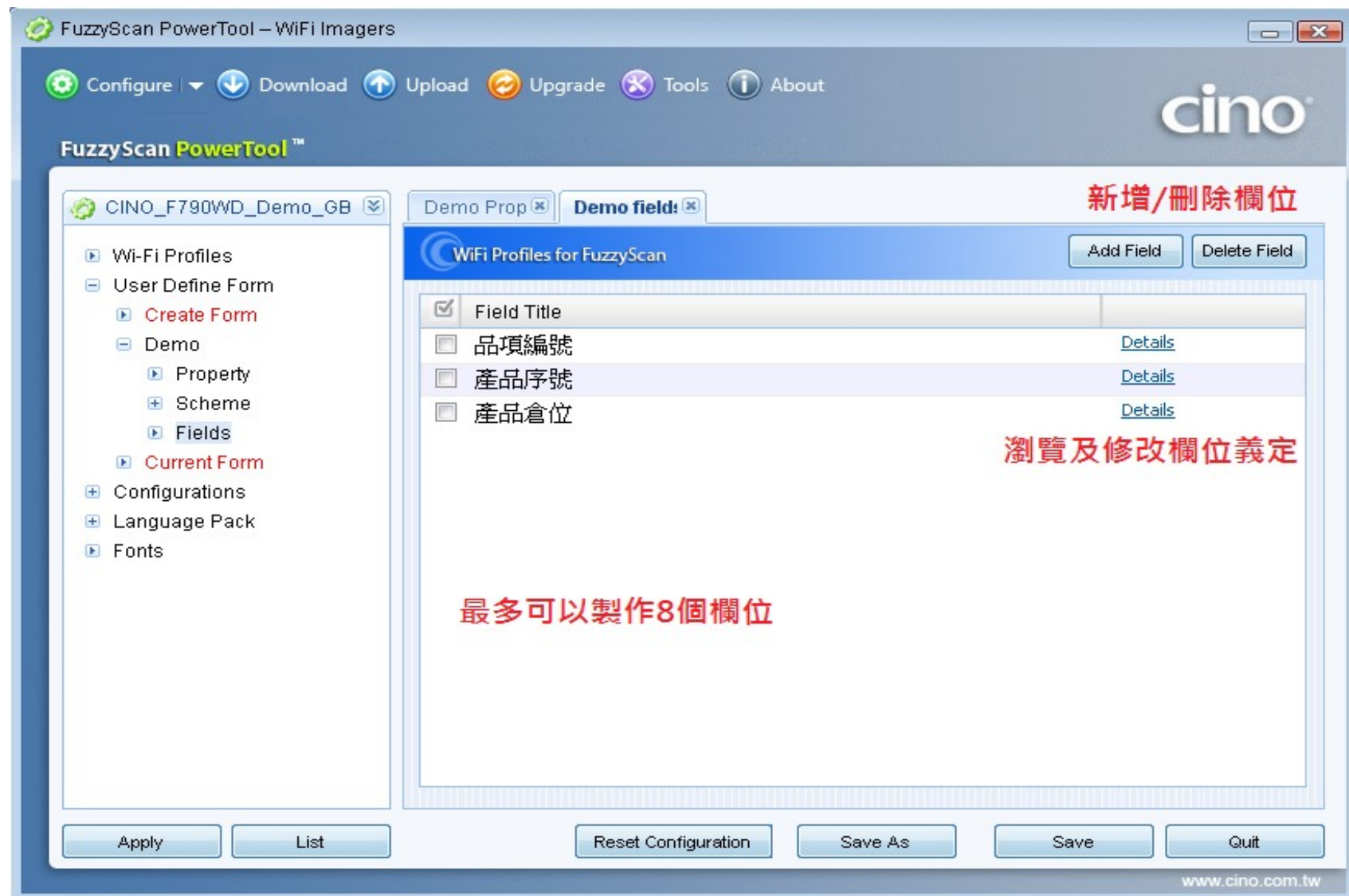
## Form/ 表單 屬性設定



表單台稱  
選擇語系  
每筆資料結束符號  
欄位資料間隔符號  
標題字型大小選項  
內容字型大小選項  
連線掃描下是否自動傳輸  
資料收集下是否自動儲存  
時間儲存及傳送格式

資料傳送時的欄位順序設定

## 表單 / 欄位設定



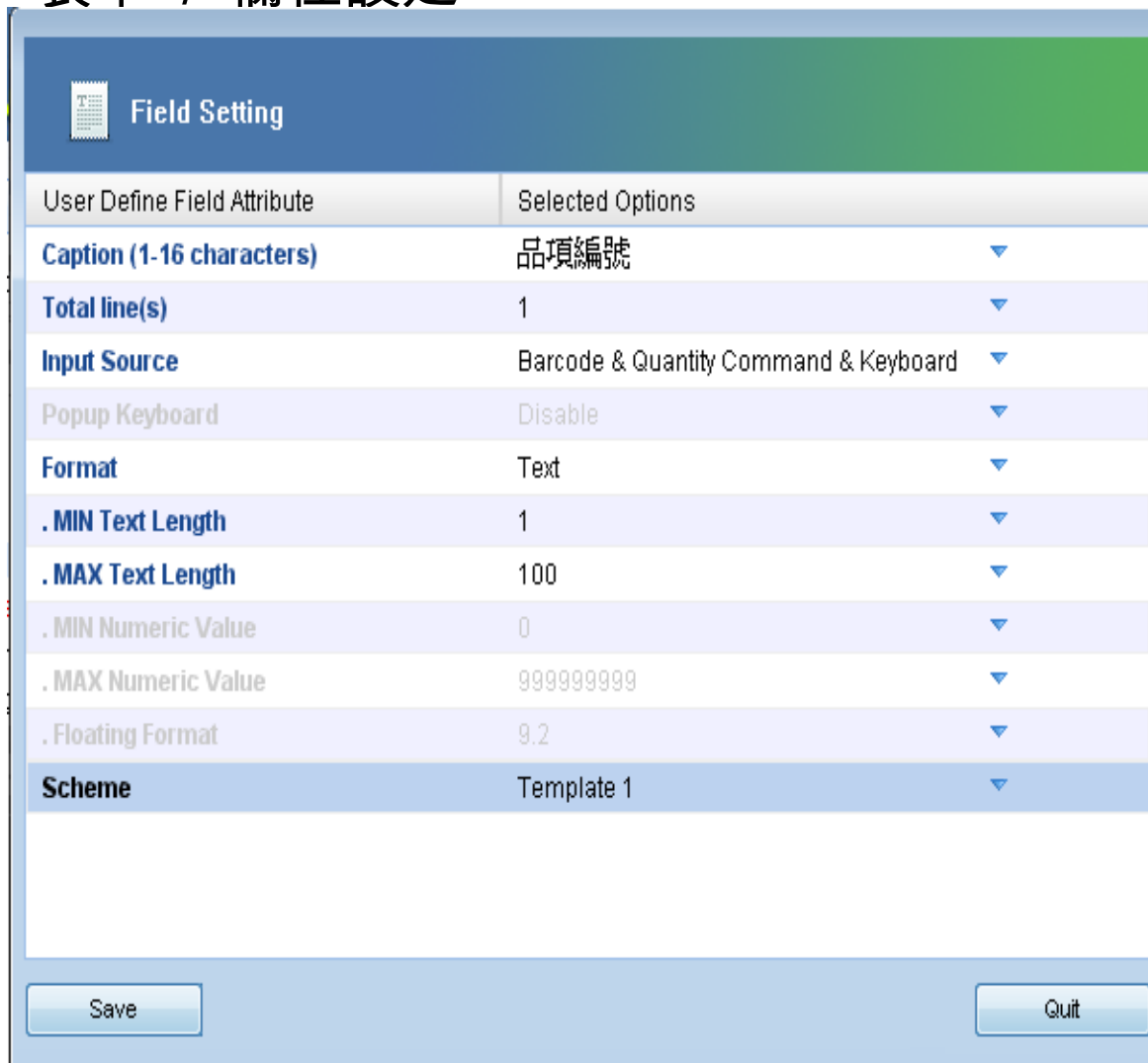
The screenshot displays the 'FuzzyScan PowerTool - WiFi Imagers' application window. The interface includes a top menu bar with options like 'Configure', 'Download', 'Upload', 'Upgrade', 'Tools', and 'About'. The main area is divided into a left sidebar with a tree view containing 'Wi-Fi Profiles', 'User Define Form', 'Demo', 'Configurations', 'Language Pack', and 'Fonts'. The 'Demo' folder is expanded to show 'Property', 'Scheme', and 'Fields'. The 'Fields' folder is selected, showing a list of fields: 'Field Title' (checked), '品項編號', '產品序號', and '產品倉位'. Each field has a 'Details' link. The interface also features buttons for 'Add Field' and 'Delete Field', and a red text overlay that reads '新增/刪除欄位'. At the bottom, there are buttons for 'Apply', 'List', 'Reset Configuration', 'Save As', 'Save', and 'Quit'. A red text overlay at the bottom center states '最多可以製作8個欄位'. The bottom right corner shows the website 'www.cino.com.tw'.

新增/刪除欄位

瀏覽及修改欄位義定

最多可以製作8個欄位

## 表單 / 欄位設定



The image shows a 'Field Setting' dialog box with a table of configuration options. The table has two columns: 'User Define Field Attribute' and 'Selected Options'. The 'Selected Options' column contains dropdown menus with various values. At the bottom of the dialog are 'Save' and 'Quit' buttons.

User Define Field Attribute	Selected Options
Caption (1-16 characters)	品項編號
Total line(s)	1
Input Source	Barcode & Quantity Command & Keyboard
Popup Keyboard	Disable
Format	Text
. MIN Text Length	1
. MAX Text Length	100
. MIN Numeric Value	0
. MAX Numeric Value	999999999
. Floating Format	9.2
Scheme	Template 1

欄位設定

欄位標題

欄位輸入資料行數

輸入資料方式, 讀條碼/鍵盤/數字條碼

自動彈出上虛擬鍵盤

欄位資料型態, 文字/數字/含小數點

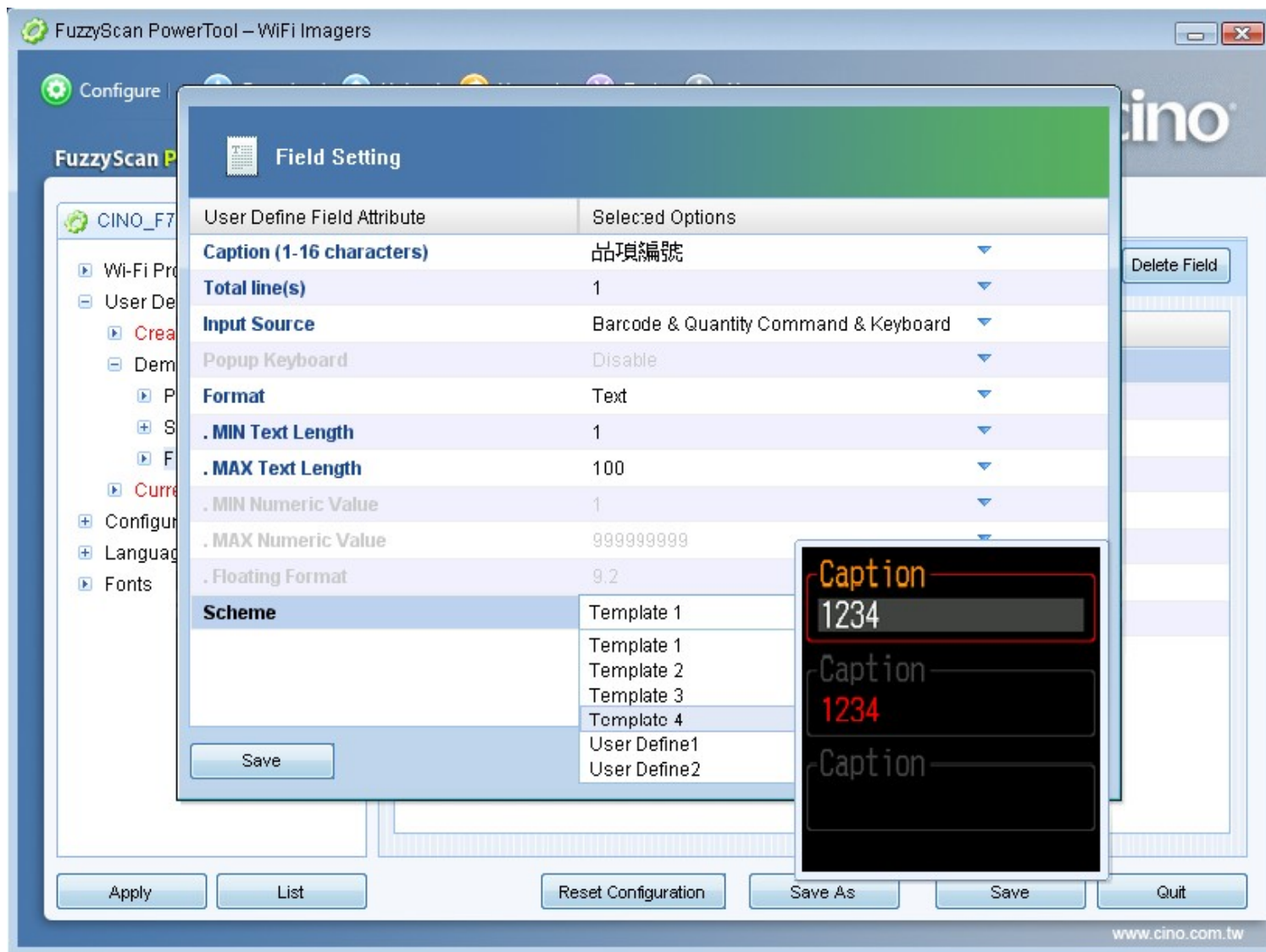
欄位文字最小/最大長度

欄位數值最小/最大值

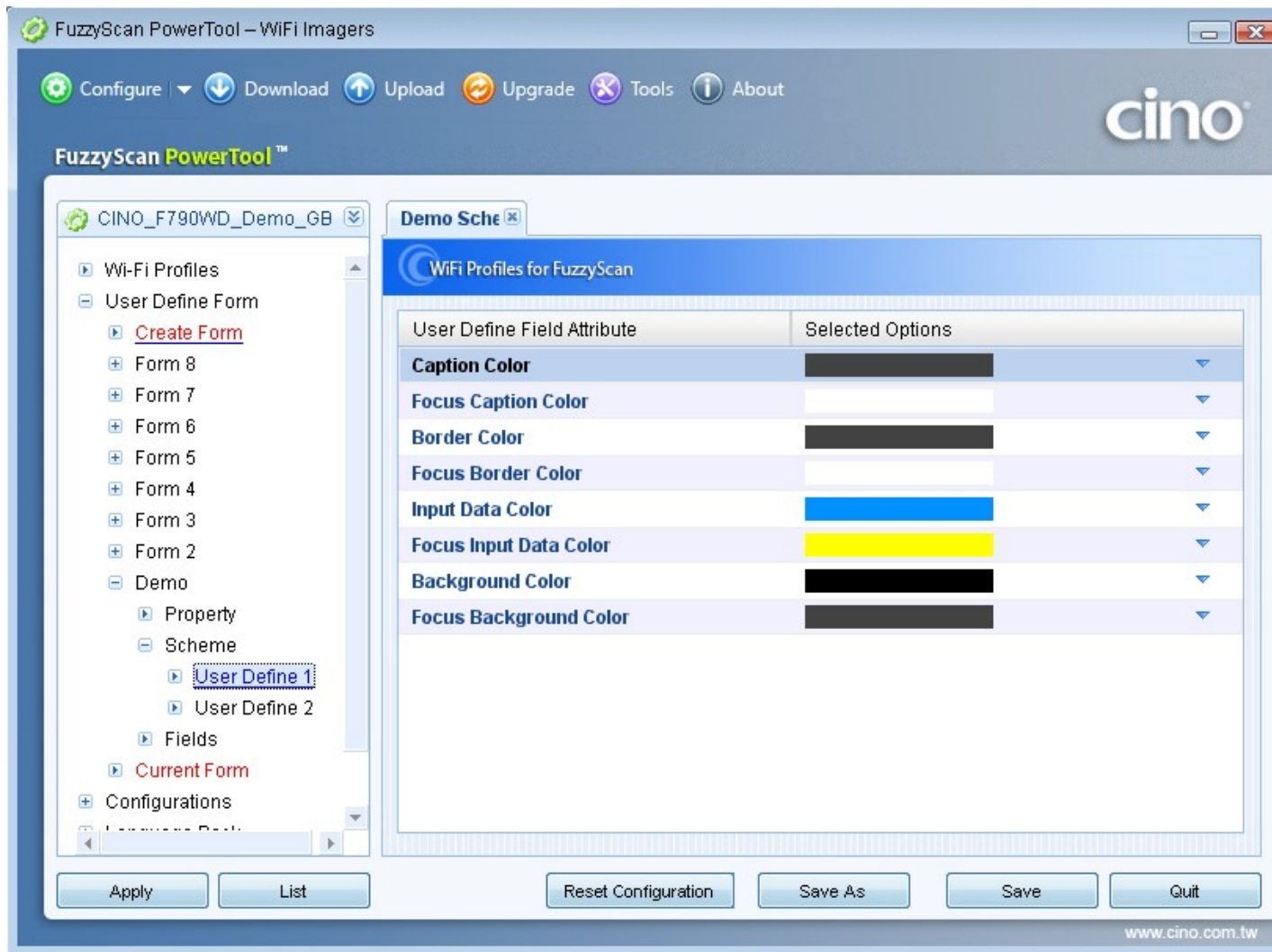
小數點設定

欄位色彩設定

## 表單 / 欄位設定

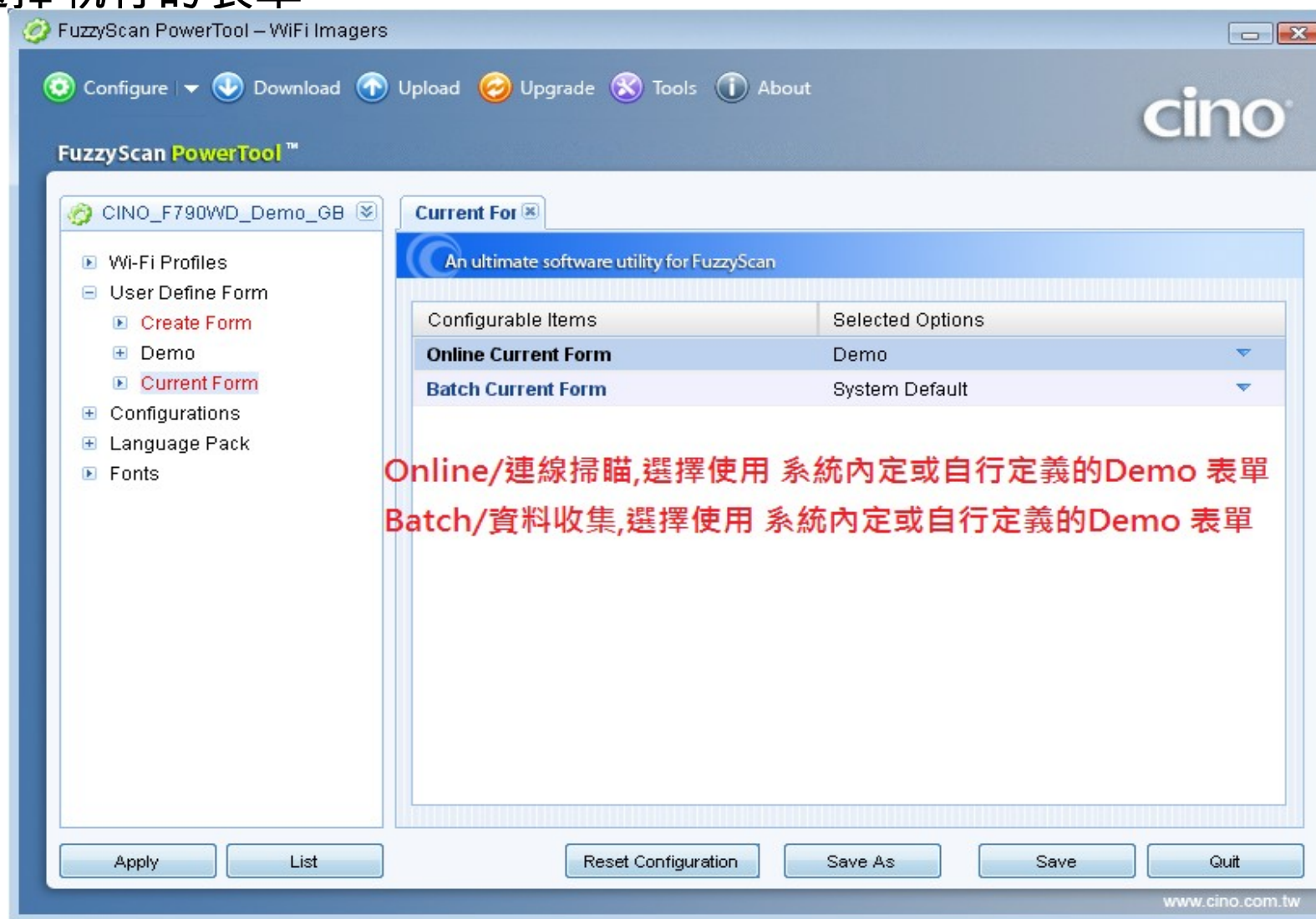


## 表單 / 欄位設定 / 自行定義顏色格式



標題顏色  
執行時,標題顏色  
邊框顏色  
執行時,邊框顏色  
資料內容顏色  
輸入時資料內容顏色  
背景顏色  
執行時,背景顏色

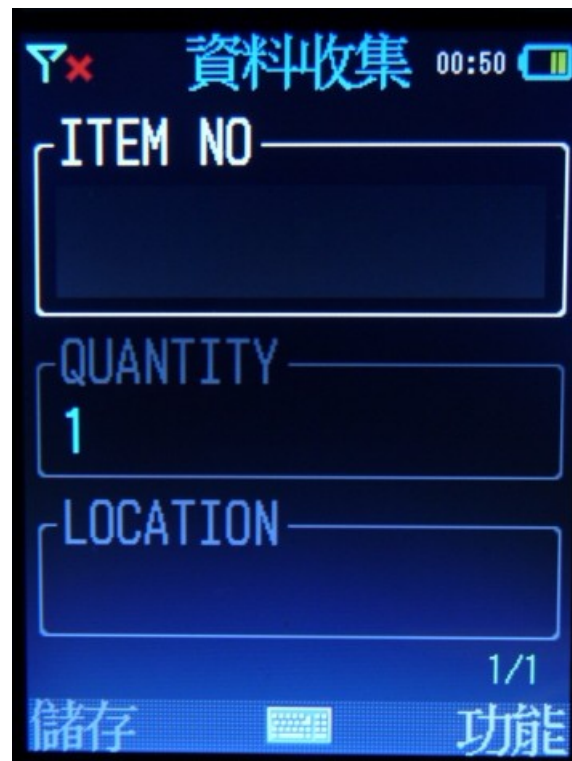
## 選擇執行的表單



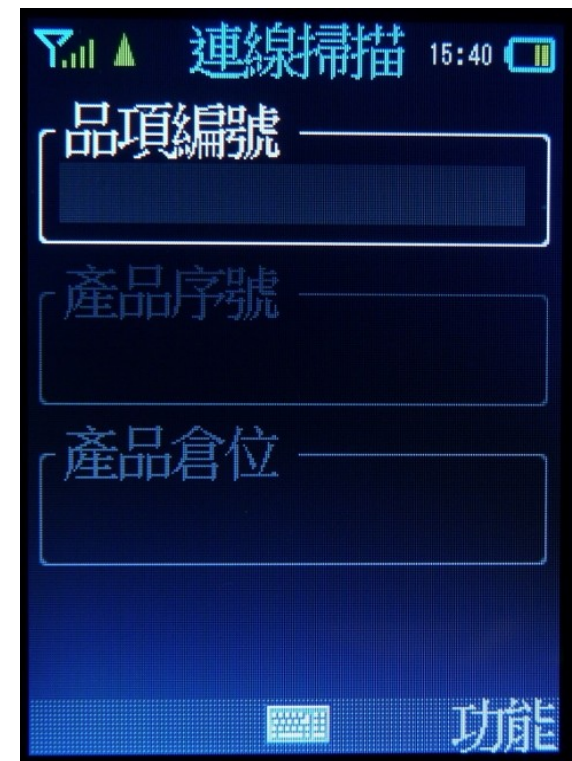
## 選擇執行的表單



**ONLINE/ 連線掃描  
出廠預設畫面**

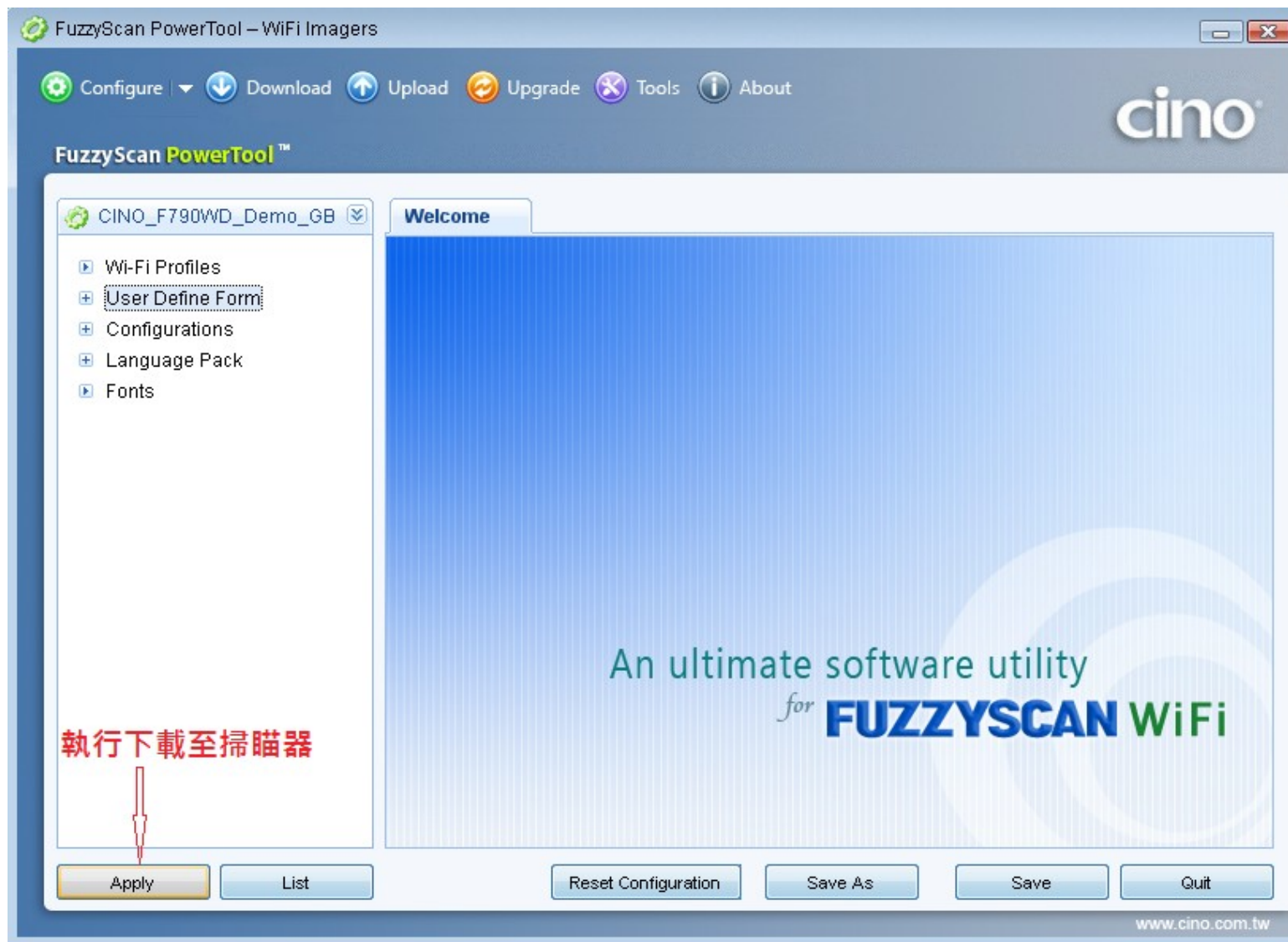


**Batch/ 資料收集  
出廠預設三欄位畫面**



**資料收集 / 連線掃描  
使用者自行定義畫面**

## Download/ 下載





## Download/ 下載

FuzzyScan PowerTool – WiFi Imagers

Configure | Download | Upload | Upgrade | Tools | About

FuzzyScan PowerTool™

Download files

Please go to your data folder and select desired downloaded files.

C:\Spark\_Cino\WiFi\_Scanner\CINO\_F790WD\_Demo\_GB.prj

Files	Download Files
<input checked="" type="checkbox"/> Wi-Fi Profile	CINO_F790WD_Demo_GB.prof
<input checked="" type="checkbox"/> Form	F790WD_Demo_Spark
<input checked="" type="checkbox"/> Configuration	CINO_F790WD_Demo_GB.frm
<input type="checkbox"/> Language Pack	Demo
<input type="checkbox"/> Font	CINO_F790WD_Demo_GB.conf

1. Connect USB cable to the cradle. 掃描器,需進入 本機設定/進階設定/主控模式,再放到基座  
2. Enter "SETUP" from the desktop main menu of the scanner. Select "Advanced" → "Host Link Mode" to enter host link mode.  
3. Put the scanner onto the cradle, then press "Download" button to start downloading file.

Waiting ...

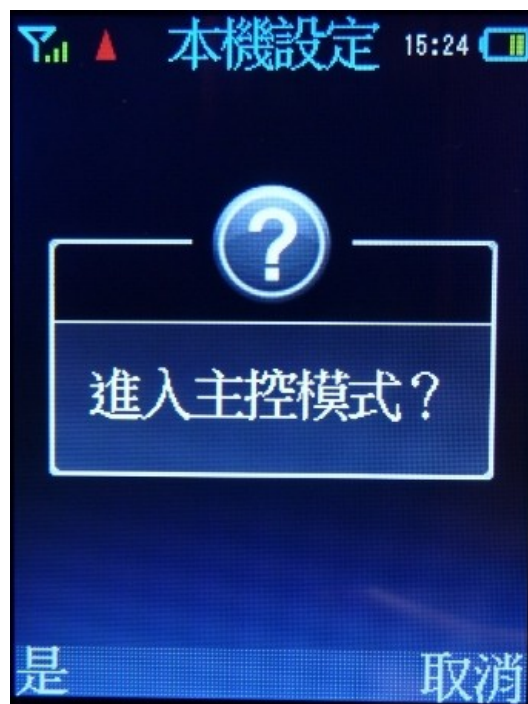
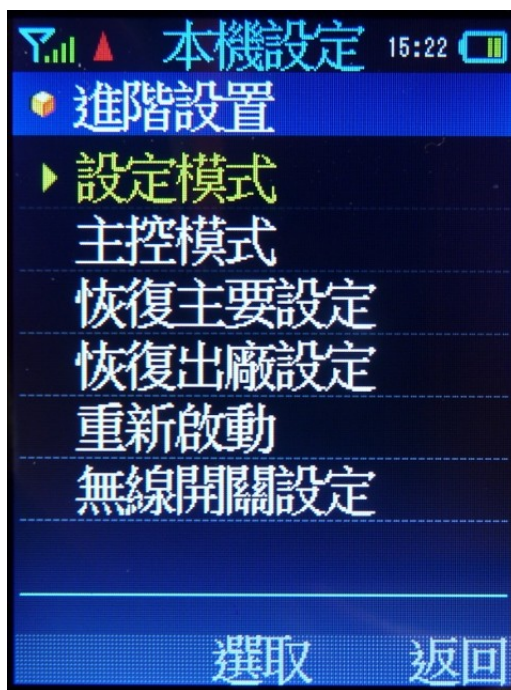
AutoDetect [COM] Download Abort

Status (CINO FUZZYSCAN F790WD 1.00.00 or above)  
Form File:  
CINO\_F790WD\_Demo\_GB.frm

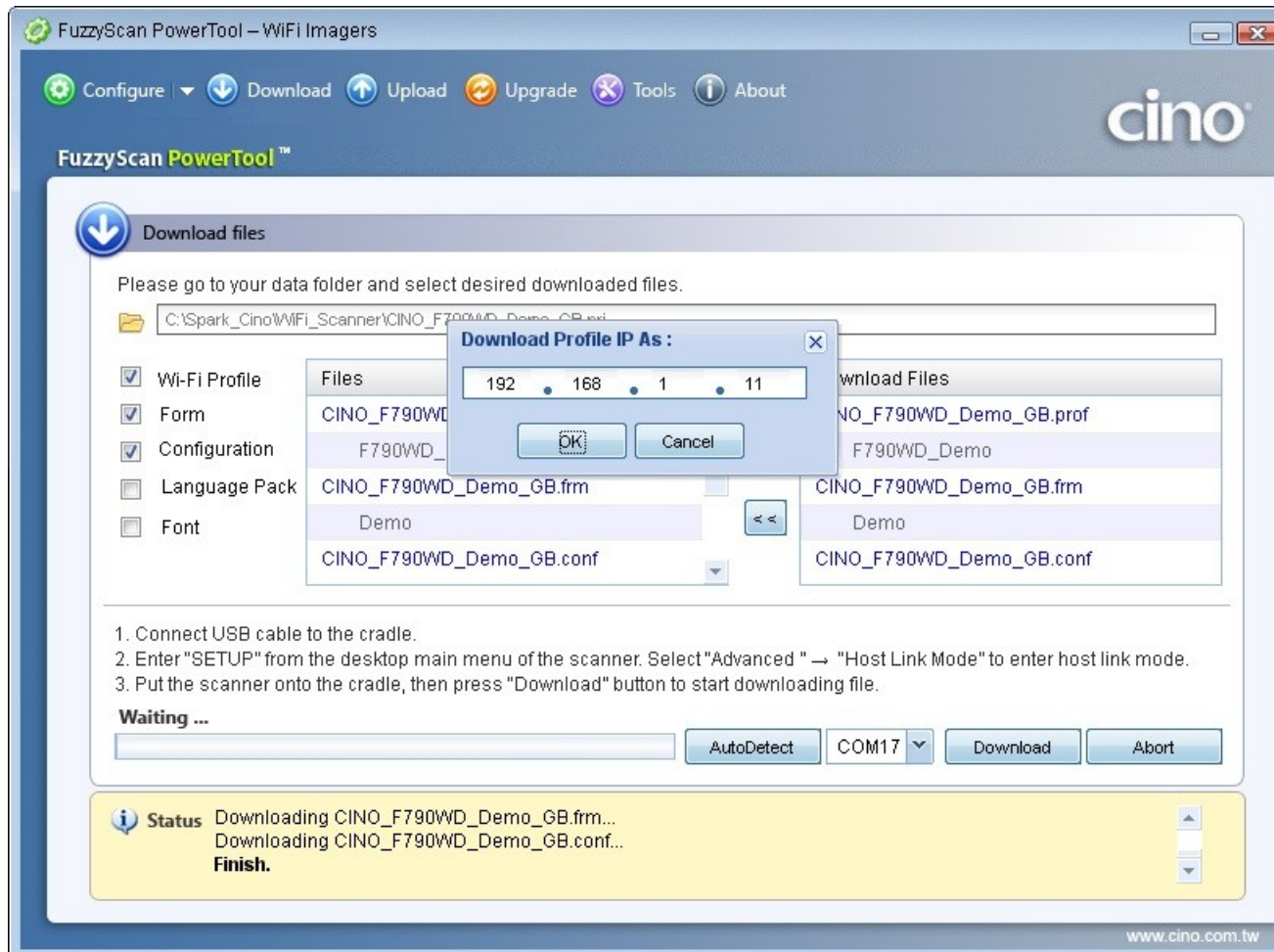
選擇COM, 下載

www.cino.com.tw

## Download/ 下載



## Download/ 下載



輸入 IP: 是指目前要下載掃描器的 IP.

如果多台安裝時, 只要修改 IP 就可以直接下載